

South Australia (SA)

A Place to Create

DELIVERY PLAN



Government
of South Australia



CreateSA

Easy Read Document



Created by



**Access
2Arts**

Making disability and art work

About this document



The Government of South Australia
and **CreateSA** wrote this plan.



**Government
of South Australia**

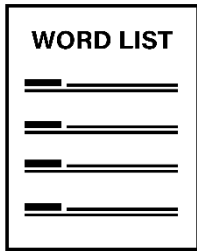
When you see the word 'we' it means
the Government of South Australia.



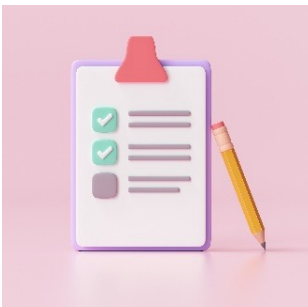
We wrote information in an easy to read way.
We use pictures to explain some ideas.

Bold
Not Bold

We have written some words in **bold**.
This means the letters are thicker and darker.



We explain what these words in **bold** mean.
There is a list of these words on page 23.



This is an Easy Read summary
of the **Delivery Plan**.

This means it only includes the most
important information about how the plan
will be delivered.

What's in this document

About this document	1
About A Place To Create	4
Delivery Plan Overview	6
1. Arts for everyone	8
2. The best place in the world for artists to live	12
3. Arts businesses doing well	17
Word List	23
Contact Us	29



We recognise **Aboriginal** peoples as the traditional owners of our land – South Australia.



They were the first peoples to live on and use the Australian land and waters.

About A Place to Create



We have made a plan for arts and culture in South Australia.



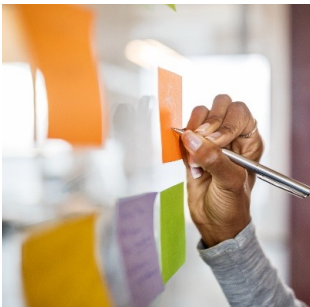
The plan is called '**A Place to Create**' – sometimes we will call this 'The Plan'.



The plan is for how to have a good future by making strong **communities**, fun places and connecting people with **art and culture** and **creative industries**.

There is another document which talks just about The Plan.

Delivery Plan Overview



A **Place to Create** is for everyone in South Australia.

It is about making a good future through **arts and culture** and **creative industries**.

Delivery plans will tell people how we will do that.



This document is the **Delivery Plan** which says all the things we will do to make the plan work.

This is the first **Delivery Plan**.

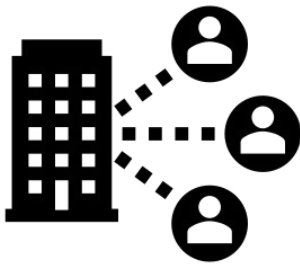
There will be more **Delivery Plans** in the future.



The **Delivery Plans** will be measured and reviewed.

CreateSA will work together with other parts of the government and community to decide how to measure things.

They will also talk with the **community** about The Plan.



The Plan will be delivered by all the different parts of the South Australian **Government**.

CreateSA will lead the plan.

1. Art is for everyone

1.1. Help Aboriginal people to be leaders in art



- 1.1.1. More help for **Aboriginal** arts.
- 1.1.2. Help the **Aboriginal** arts centre called Tandanya to reopen.
- 1.1.3. Support new **Aboriginal** arts businesses to start.
- 1.1.4. Work with **Creative Australia** on their Aboriginal arts priorities.

1.2. Help **regional** South Australia to have more art and artists



- 1.2.1. More support for **regional** artists.
- 1.2.2. **Country Arts SA** to have a new ten-year plan.
- 1.2.3. More **access** for **regional** people to **arts and culture**.

1.3. Make sure everyone can take part in art



1.3.1. Make new plans for children and young people to learn about arts.

1.3.2. Help families pay for children's music lessons.

1.3.3. Find ways to give people from **disadvantaged communities** more access to arts.



1.3.4. Create new plans for **accessibility** by working with people with disability and **disadvantaged communities**.

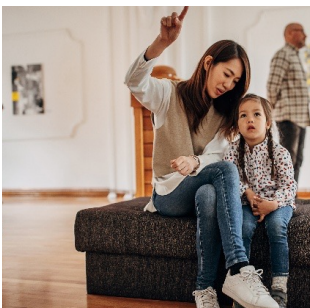
1.3.5. Find new ways for art to help people be healthy.

1.4. Make places for people to meet and see art



1.4.1. Make safe arts and culture spaces for **Aboriginal** people to meet.

1.4.2. **Local government** to have lots of different places for communities to do arts.



1.4.3. Make places where people can make art together across **South Australia**.

2. The best place in the world for artists to live

2.1. Help artists make new work



- 2.1.1. Help **Aboriginal** artists to make art on their country.
- 2.1.2. Make sure that big **public art** projects reflect the **diversity** of the **community**.
- 2.1.3. Make a program to help artists explore new types of art.
- 2.1.4. Work with companies to make TV shows in **South Australia**.
- 2.1.5. Find ways to make art a part of **Government** spaces.

2.2. Support more training for artists and people working in the arts



2.2.1. Help train more **Aboriginal** people to work in the arts.

2.2.2. Look at making a new school for festival and event work.

2.2.3. Make sure **Adelaide College of the Arts** has courses that help artists.



2.2.4. New partnerships for organisations to help train people in the arts.

2.3. Make sure artists have lots of different opportunities



- 2.3.1. Give training to new artists, especially **Aboriginal** artists.
- 2.3.2. Give training to artists that help them develop good jobs.
- 2.3.3. Make **CreateSA** the place for everyone to connect with the government about art.
- 2.3.4. Give more money to support the music industry.

2.4. Help artists to have what they need for good careers



2.4.1. More funding for **CreateSA** to give arts grants.

2.4.2. Work with **disability arts** organisations to support d/Deaf and disabled artists including,
- help with **access**
- help with funding like NDIS.



2.4.3. Look at how artists can get cheaper housing.

2.4.4. Work with **Creative Australia** to make sure there is information about fair and safe work in the arts.

2.4.5. Look at ways to make raising money easier in the arts.

2.4.6. Help artists to be better at business skills.

2.5. Help artists find new people to see or buy their work

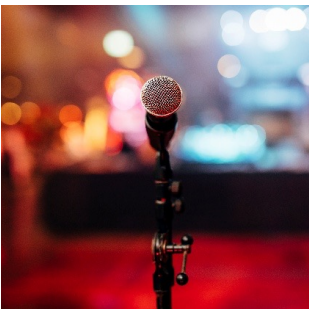


- 2.5.1. Support artists to find new places to sell their work.
- 2.5.2. Find and share new opportunities for artists through **Government** networks overseas.
- 2.5.3. Use networks to share information and make connections for artists.



3. Arts businesses doing well

3.1. Support lots of different arts businesses



3.1.1. Make sure arts businesses are safe for **Aboriginal** people.

3.1.2. Make sure **CreateSA** arts grants support this plan.

3.1.3. Make sure arts organisations are strong.



3.1.4. Work with **Creative Australia** and its different parts.

3.1.5. Support more live music, like bands, in South Australia.

3.2. Look after and develop organisations and the art and buildings they have



- 3.2.1. Make a fund for money to support arts.
- 3.2.2. Support bringing new arts to **South Australia** and help lots of different people to see the art.
- 3.2.3. Help create different types of funding for the arts.
- 3.2.4. Look for new offices for some of the arts organisations.

3.3.Support arts festivals and events



- 3.3.1. Look at how **arts** festivals can work better together.
- 3.3.2. Find opportunities for more local artists and art at festivals and events.

3.4. Help our arts make more impact



- 3.4.1. Make a plan for arts organisations to work together more.
- 3.4.2. Encourage people to come to South Australia.
- 3.4.3. Partner with other parts of **government** to include arts in their plans.
- 3.4.4. Do more as a **City of Music**.

3.5. Make sure arts helps with climate action



- 3.5.1. Partner with **Green Industries SA** for less rubbish and more recycling in arts and culture.
- 3.5.2. Help artists to make work that helps people understand about **climate change**.

3.6. Measure the work in this plan



- 3.6.1. Make ways for people to give feedback on the plan.
- 3.6.2. Make a group for people in different parts of **government** to work together.
- 3.6.3. Create ways to measure things in the arts that help people understand how important the arts are.
- 3.6.4. Support the arts to collect and share research.
- 3.6.5. Make research partnerships with Adelaide University and Flinders University.

Word List

Bold
Not Bold

This list explains what the **bold** words in this document mean.



A Place to Create is the name of the plan that this document describes.



Aboriginal people were the first people to live on and use the Australian land and waters. Sometimes Aboriginal people are also called First Nations.



Access means that everyone can use things.



Adelaide College of the Arts

is South Australia's school for adult arts and design education.



Arts and culture can be painting, drawing, music, dance, theatre, books, festivals and lots of other things.



City of Music is a name given by a group called UNESCO to show that a city has an important commitment to music and creativity.



Climate change is the change of the earth's climate because of humans.



Communities are groups of people with the same interests or background, in this document communities means all of the groups in South Australia.



Country Arts SA is in charge of arts in regional South Australia.



CreateSA is the part of the state government for arts, cultural and creative industries, it used to be called Arts South Australia.



Creative Australia is the part of the Australian government that gives money and advice for the arts.



Creative industries are businesses in screen, craft, design, fashion, games, and much more.



Delivery Plan shows the steps to making a plan happen.



Disability arts is art made by disabled people to tell their own stories.



Disadvantaged communities are community groups who may find some things harder because they might not have as much money or education or come from different places.



Diversity means including lots of people from different backgrounds and communities.



Australian Government

Government is the group in charge of plans and policies, it can be for the whole country of Australia (Commonwealth), or a state (like South Australia) or local (Council).



Government of South Australia

Government of South Australia is the group in charge of plans and policies for the state of South Australia. Not national government (Commonwealth) or local (Council).



Green Industries SA is the part of the state government that is in charge of businesses helping with climate change.



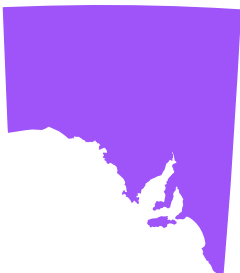
Local government is the group in charge of plans and policies for a local area (like Adelaide), its also known as a Local Council.



Public art is art that is in public places like parks or squares.

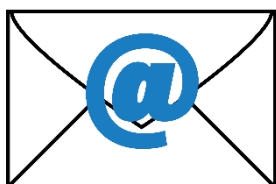


Regional means places outside of the city.



South Australia is a state of the country of Australia, the capital is Adelaide.

Contact Us



E-mail: **create@sa.gov.au**



Website: **create.sa.gov.au**

This Easy Read document
was created by
Access2Arts for CreateSA.